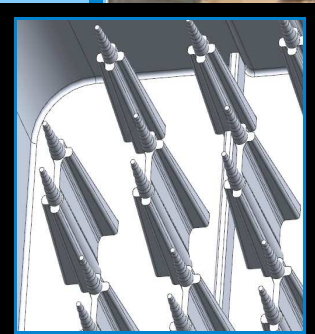


**Zanetti
Stampi** s.r.l.

moulds engineering
and production

MOULD: TULIPS CRATE 830x630x200



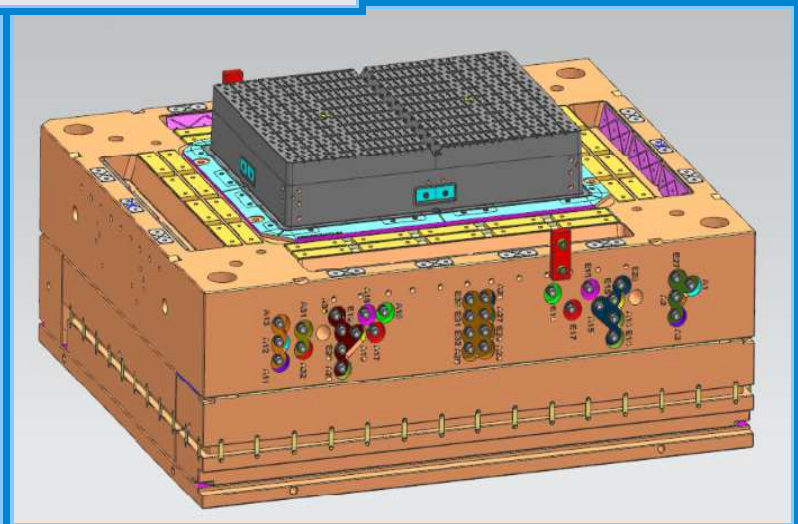
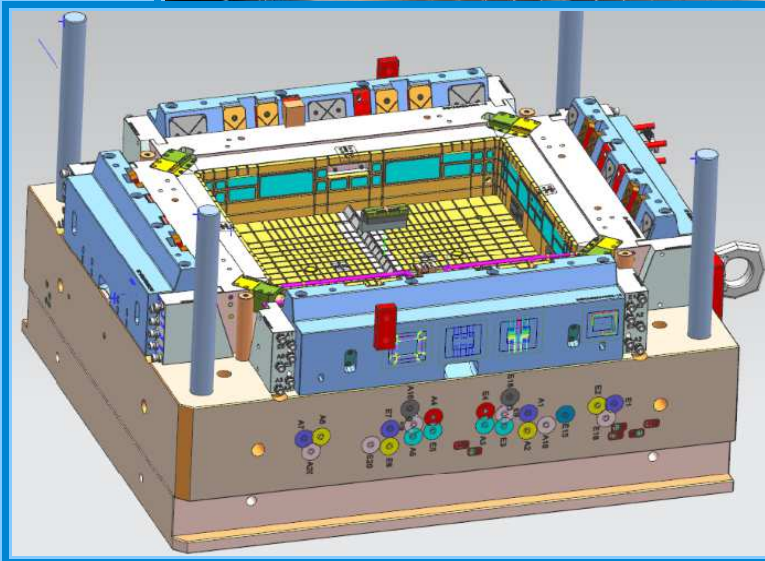
zanetti
stampi s.r.l.

moulds engineering
and production



Zanetti Stampi s.r.l.

moulds engineering
and production



MOLD DATA SHEET

MOLD DIMENSIONS : 1600 X 1400 X 1300 mm

MOLD WEIGHT : 16.000 Kg

MATERIALS

MOLD STRUCTURE IN 1.2312 / 1.1730 STEEL

CAVITY INSERT / CORE INSERT 1.2311

MIDDLE RIB INSERTS/COOLING BUSHES Ampco/Bronze

INJECTION SYSTEM: HOT RUNNER 6 POINTS VG

EJECTOR SYSTEM : ejector pins+inserts moved by machine

INJECTION MOLDING DATA

MATERIAL: RECYCLED / PP

BOX WEIGHT : 6 Kg

BOX DIMENSION : 830 x 630 x 200

INJECTION MACHINE : 1500 Ton

CYCLE TIME: 45 pcs. / hours