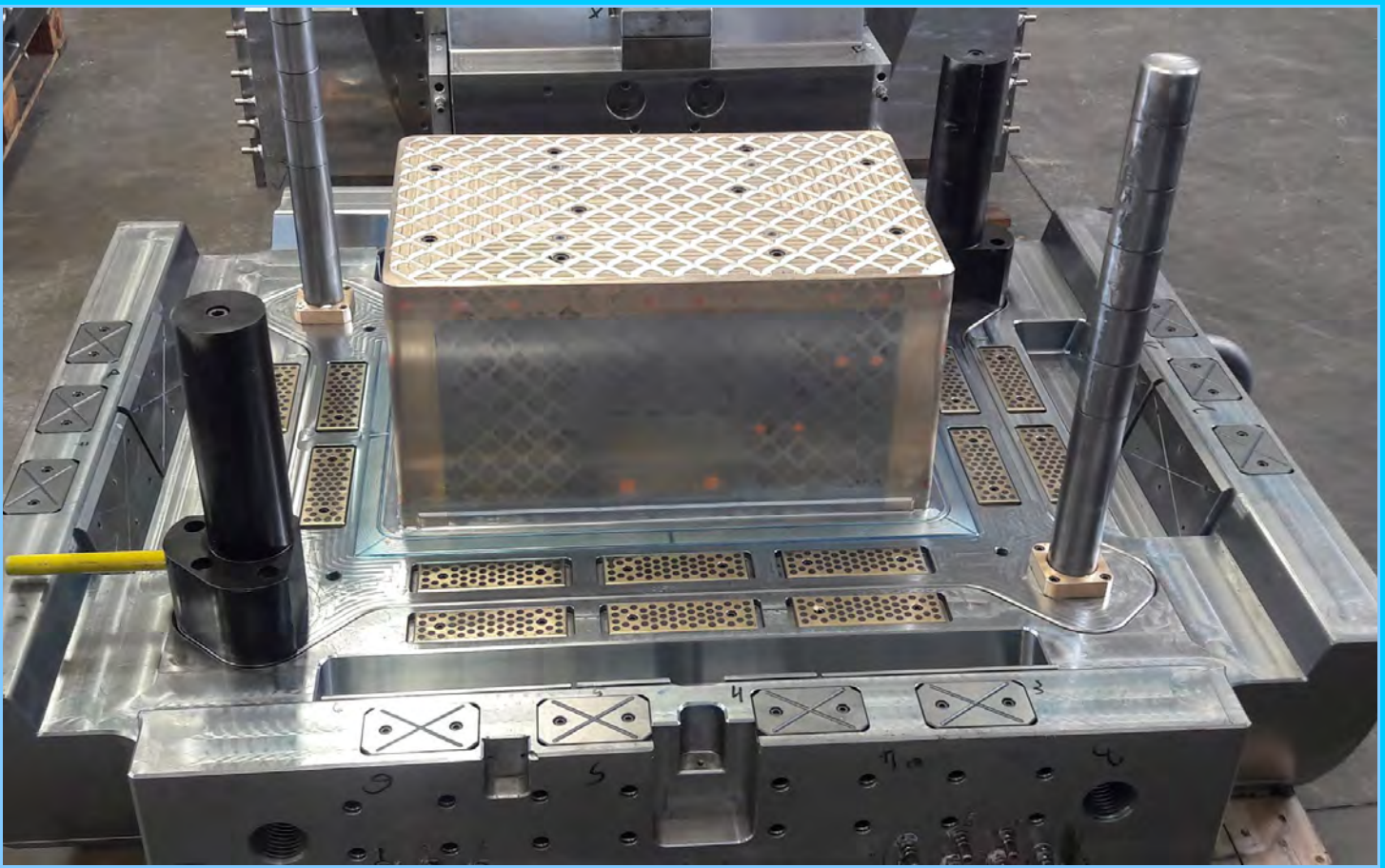
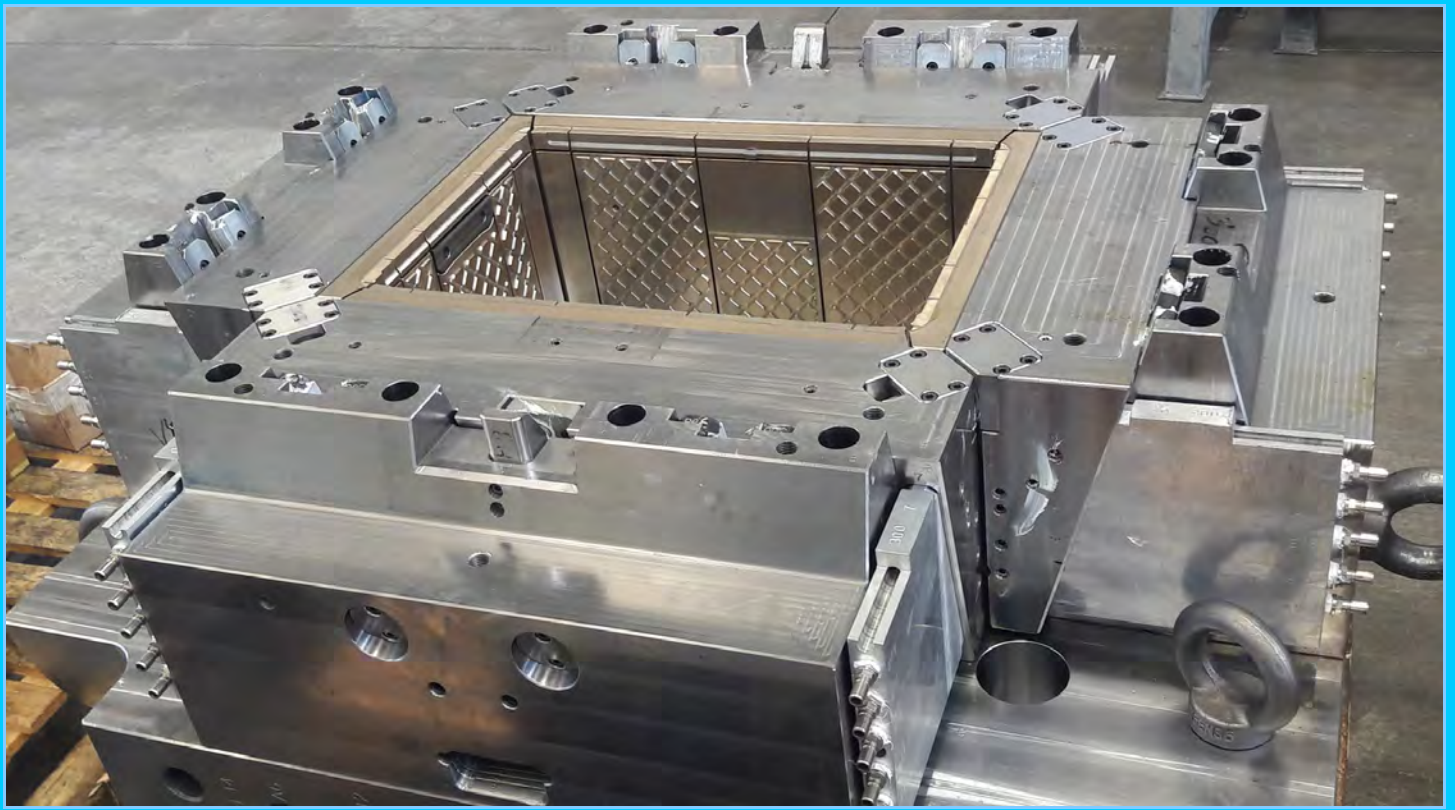


**Zanetti  
Stampi** S.R.L.

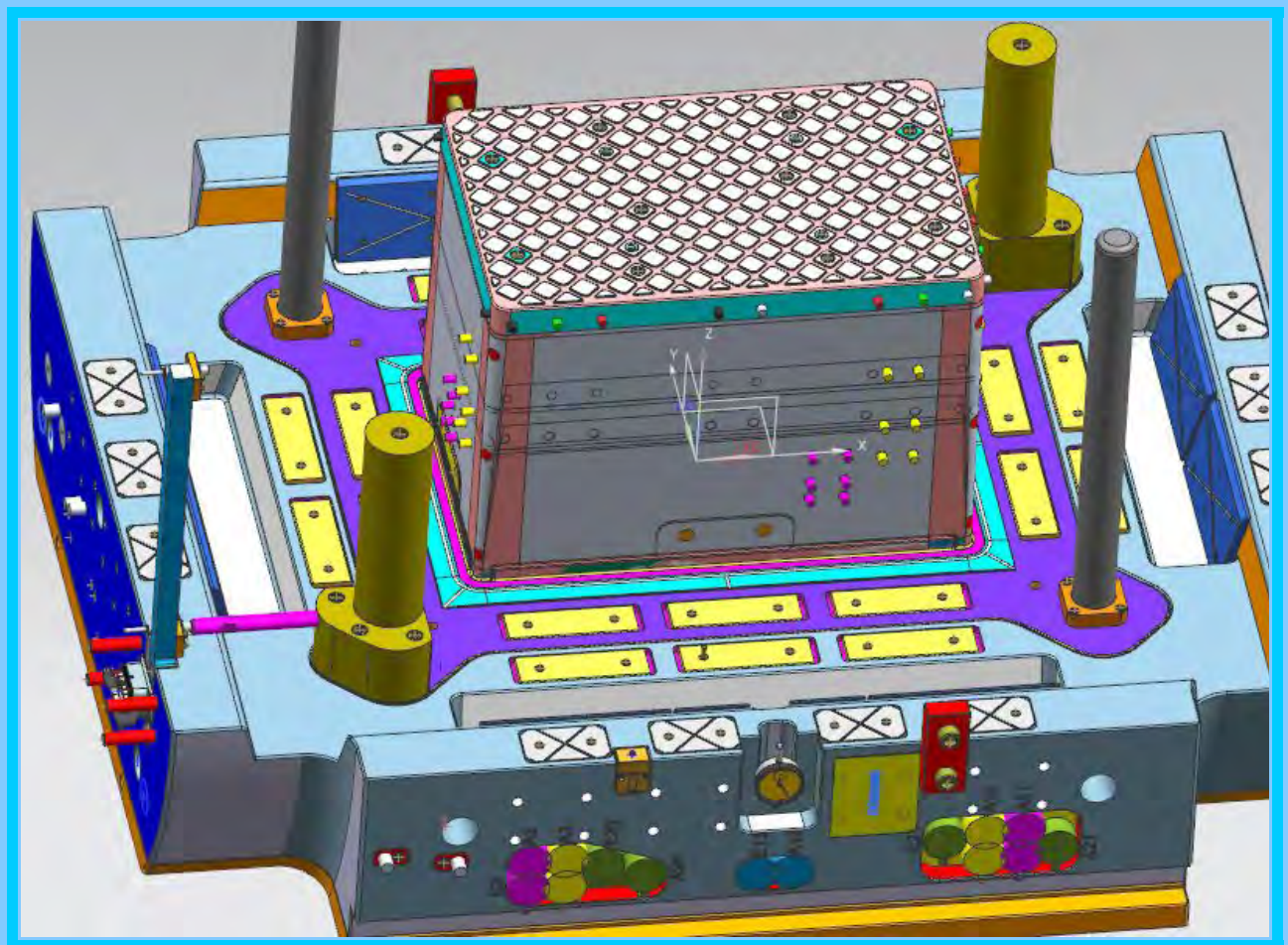
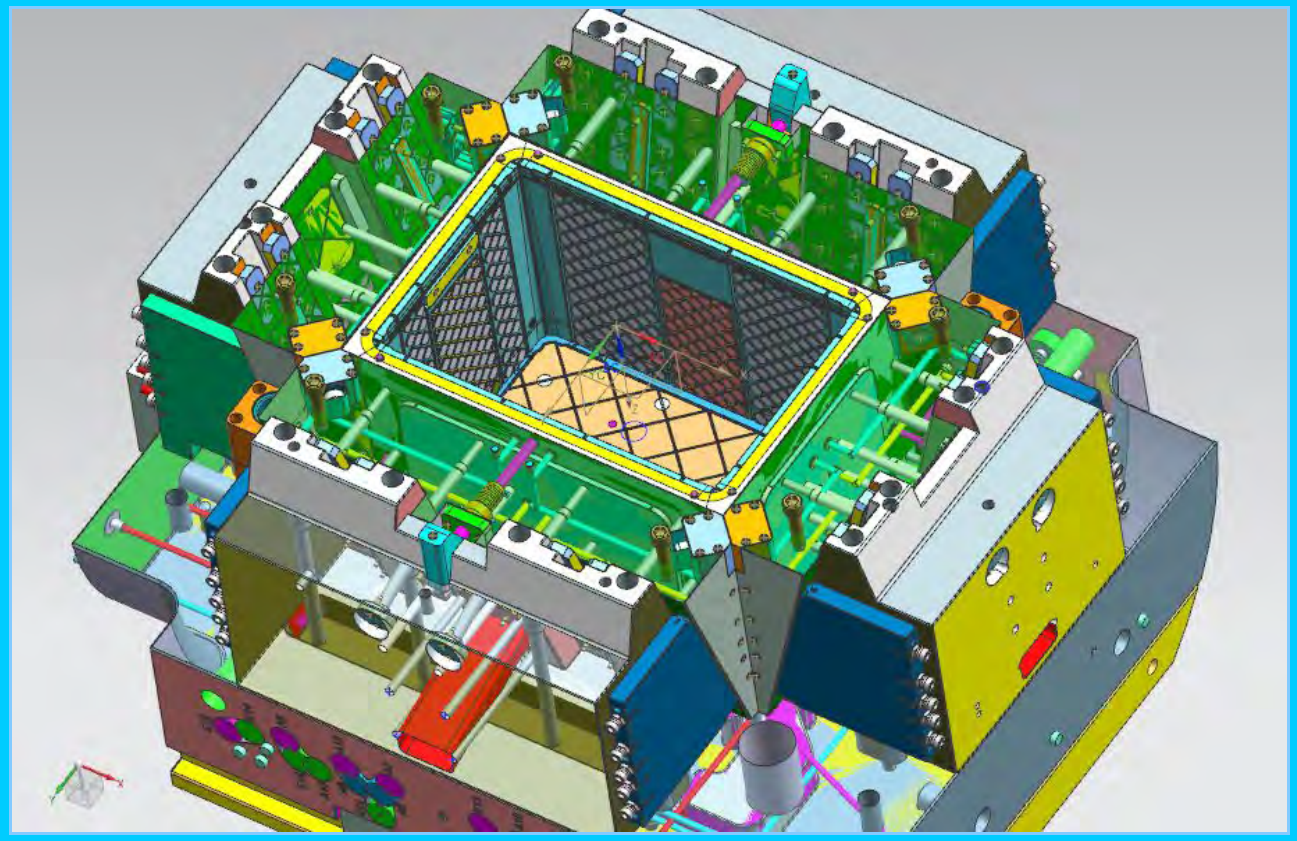
moulds engineering  
 and production

**MOULDS : BREAD CRATES MODULAR MOULDS  
2 MOULDS FOR 6 HEIGHT VERSION**





**25036 PALAZZOLO S/OGLIO (BS) ITALY - Via Pontida,8/A - Tel. (030) 7401162 - Fax (030)7301499 C.FISCALE / P.IVA / ISCR. REG. IMPR. : 03048730984 - C.C.I.A.A. R.E.A.: BS-500978**



25036 PALAZZOLO S/OGLIO (BS) ITALY - Via Pontida,8/A - Tel. (030) 7401162 - Fax (030)7301499 C.FISCALE / P.IVA / ISCR. REG. IMPR. : 03048730984 - C.C.I.A.A. R.E.A.: BS-500978

**DATA SHEETS 2 MOULDS**  
**BREAD CRATES 600x400**  
**MOULD 1 LOW VERSION (110-140-200)**  
**MOULD 2 HEIGHT VERSION (240-300-410)**

**MOLD DIMENSIONS** : 1250 X 1100 X 1100(max) mm

**MOLD WEIGHT** : 10.000 Kg (max)

**MATERIALS:**

**MOLD STRUCTURE** 1.2312/ 1.1730

**CAVITY INSERT / CORE INSERT / SLIDERS** **Bronze Alluminum**

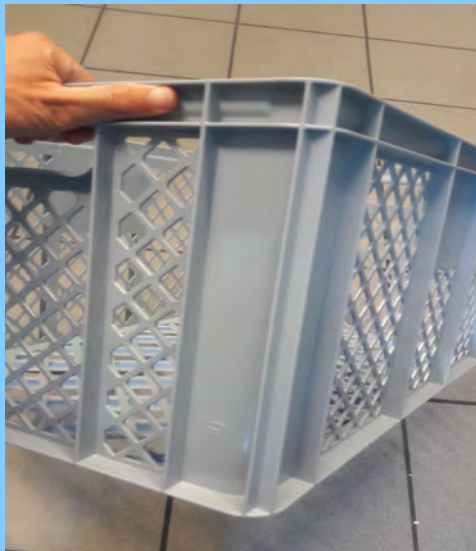
**TOP CORE +ANGLE** **Bronze Alluminum**

**INJECTION SYSTEM** :6 POINTS HOT RUNNER WITH HYDRAULIC VALVE GATE (PSG)

**EJECTOR SYSTEM** : EJECTION FRAME MOVED BY 2 CYLINDER

**MAIN MOULD MOVEMENTS** :

**FIX SIDE**: 4 CHEEKS MOVED BY 4 HYDRAULIC CYLINDER  
2 MECHANICAL HANDLES



**CORE SIDE** : EJECTOR FRAME MOVED BY 2 CYLINDER

**DATA MATERIAL**: HD-PE

**BOX WEIGHT** : 2 Kg (for 410 height version)

**INJECTION MACHINE** : STORK 1000Ton

**CYCLE TIME**: 90 pcs. / hours (for 410 height version)